



Disti Kleen, Incorporated

13420 Reese Blvd. W
Phone: (704)948-1257
E-mail: disti@disti.net

Huntersville, NC 28078
Fax: (212)202-4526
Web Page: www.disti.net

Solvent Recovery Questionnaire



Disti K-2 & K-16 Series Solvent Recovery

*For the very small generator, from 2-4 GPH **

The Disti K Series units, with filling capacities of 8 gallons (K-30) and 15 gallons (K-60), are distillers which allow the recycling and the reuse of solvents through a simple distillation process that separates the contaminants (resins, polymers, pigments, paints, oils, etc.) from the original solvent. Simple, dependable operation makes the Disti K-series an economical solution for the small waste generator.



K system can be tiled for easy sludge removal or nylon bag option

Disti K-30 & K-60 Series Solvent Recovery

For the very small generator, from 2-4 GPH).*



Disti Kleen, Incorporated

13420 Reese Blvd. W
Phone: (704)948-1257
E-mail: disti@disti.net

Huntersville, NC 28078
Fax: (212)202-4526
Web Page: www.disti.net

Solvent Recovery Questionnaire

DW 50 and DW 100 Solvent Recovery:

Distillation output *)

Model DW 50: 4 - 8 GPH (16 - 32 l/h)

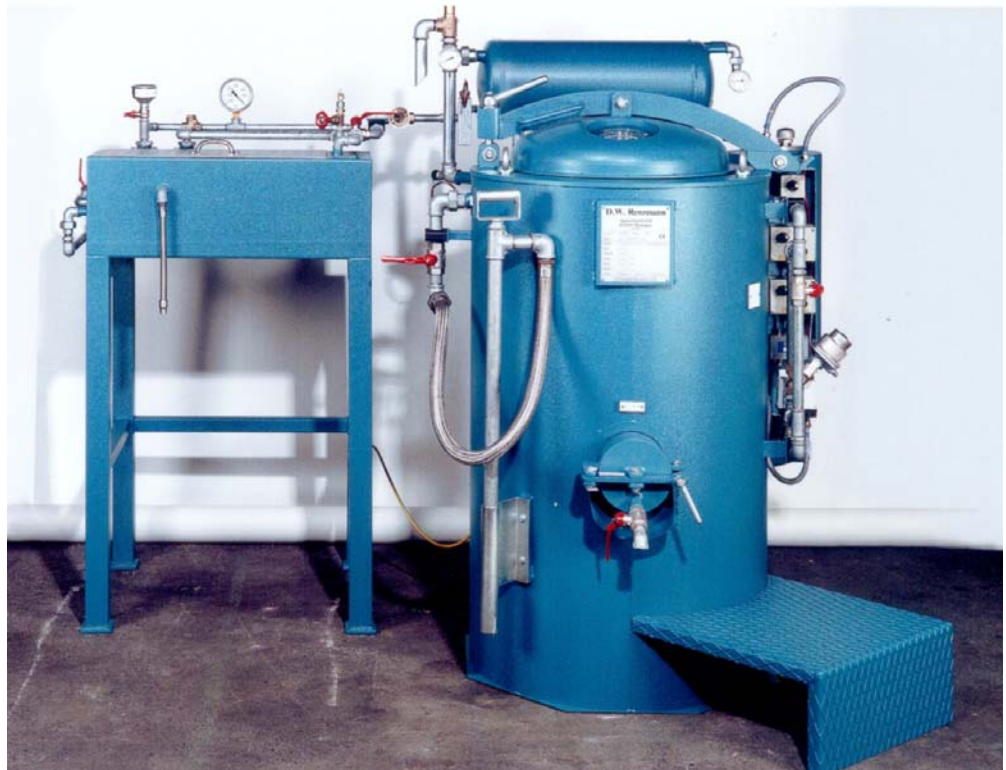
Model DW 100: 8 - 13 GPH (30 - 50 l/h)

Recovery of contaminated solvents such as concentration of residual-inks and paint (Nitrocellulose waste requires optional safety package). Manual discharge of residue or with Nylon bag. Distillation under vacuum to lower boiling point and heating temperature. Automatic shut-off when reaching desired densification.

*) *Recovery rate depends on type of solvent and solvent contamination*



Sludge Removal with Nylon Bag or via clea-out-hatch



DW System with vacuum



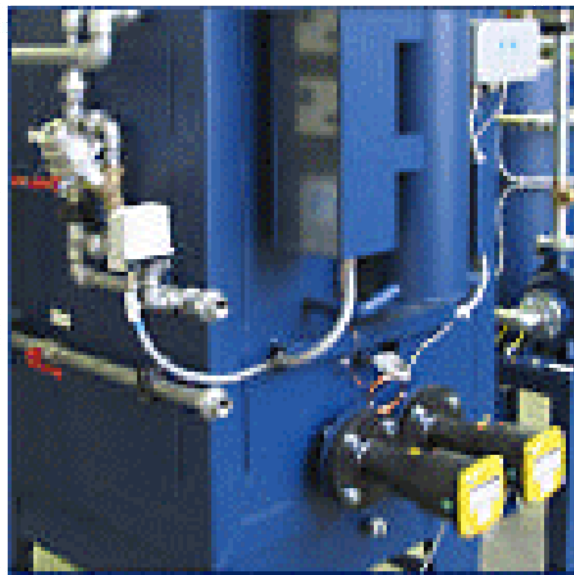
Disti Kleen, Incorporated

13420 Reese Blvd. W
Phone: (704)948-1257
E-mail: disti@disti.net

Huntersville, NC 28078
Fax: (212)202-4526
Web Page: www.disti.net

Solvent Recovery Questionnaire

M200 & M400 Solvent Recovery



Recovery of contaminated solvents such as concentration of residual-inks and paint (Nitrocellulose waste requires optional safety package). Designed for batch and continuous operation. Heating with thermal oil or high pressure steam. Manual discharge of residue. Distillation under vacuum to lower boiling point and heating temperature. Various accessories available. Explosion proof, all electrical parts are UL, FM and CSA listed.

Distillation output *)

Model M200: 8 - 15 GPH (30-60 l/h)

Model M400: 15 - 25 GPH (60-100 l/h)

*) Recovery rate depends on type of solvent and solvent contamination



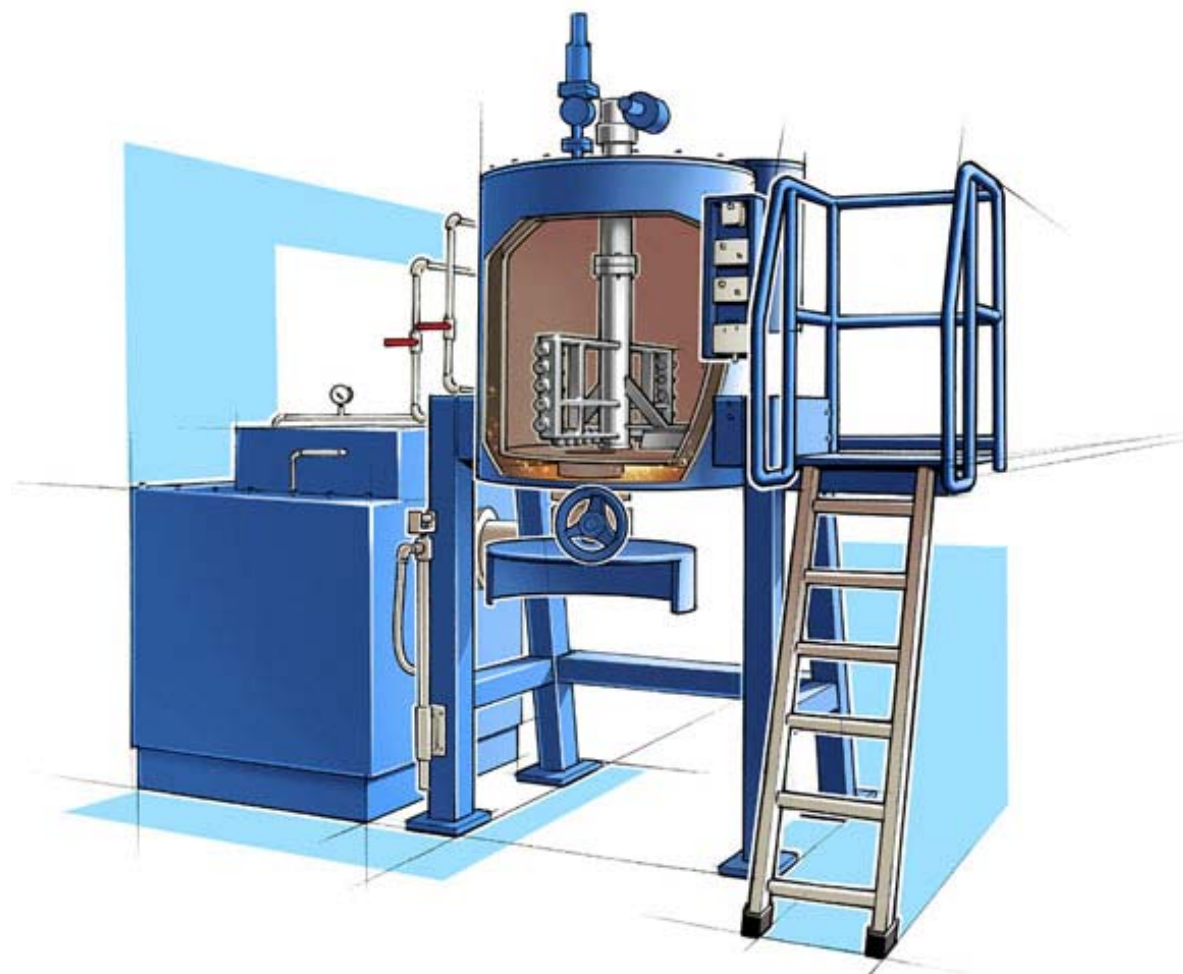
Disti Kleen, Incorporated

13420 Reese Blvd. W
Phone: (704)948-1257
E-mail: disti@disti.net

Huntersville, NC 28078
Fax: (212)202-4526
Web Page: www.disti.net

Solvent Recovery Questionnaire

Distillation Unit Model ROTO (For Large-size Solvent Generators)



Recovery of contaminated solvents such as concentration of residual-inks and paint (Nitrocellulose waste requires optional safety package).

Designed for batch and continuous operation. Heating with thermal oil or high pressure steam. Discharge of residue and efficient self-cleaning of heated surface by maintenance friendly scraper system.

Distillation under vacuum to lower boiling point and heating temperature. Automatic shut-off when reaching desired densification. Various accessories available. Explosion proof, all electrical parts are UL, FM and CSA listed.

Distillation output *)

Model 140:	8 - 15 GPH	(30-60 l/h)
Model 250:	10 - 20 GPH	(40-80 l/h)
Model 400:	15 - 25 GPH	(60-100 l/h)

*) Recovery rate depends on type of solvent and solvent contamination



Disti Kleen, Incorporated

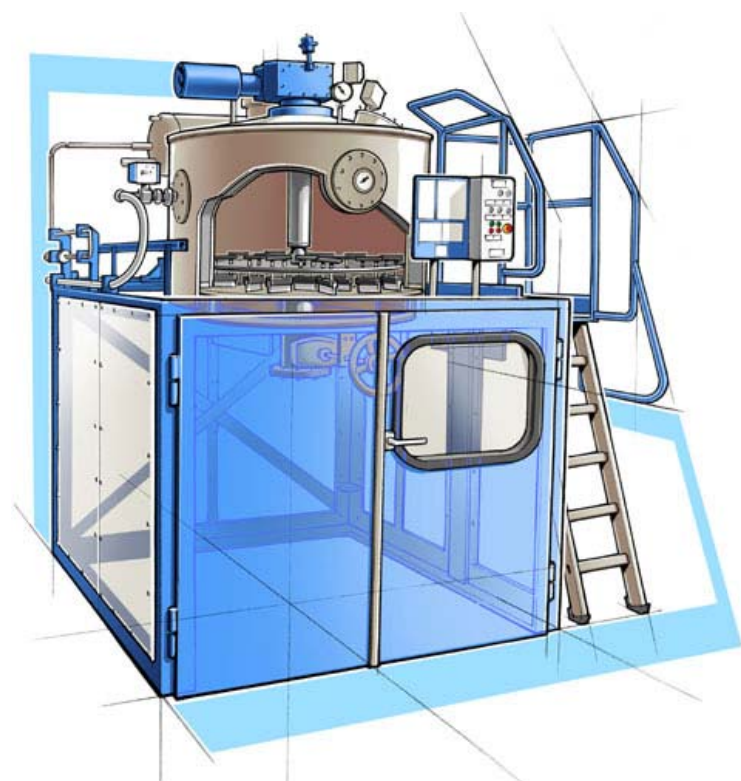
13420 Reese Blvd. W
Phone: (704)948-1257
E-mail: disti@disti.net

Huntersville, NC 28078
Fax: (212)202-4526
Web Page: www.disti.net

Solvent Recovery Questionnaire

Distillation Unit Model ROTOmAX

For Large-size Solvent Generators, who are looking for the most automated and energy efficient system in the world.



Treatment of contaminated solvents such as concentration of residual-inks, the most energy efficient recovery system available. Steam heated from bottom, excellent heat carriage and constantly high heating power unattached from fill level. Discharge of residue and effective self cleaning of the heated bottom by powerful scraper system. No malfunction of any level sensors in the distillation kettle, as all filling functions are monitored by load cells.

Detailed data collection of contaminated solvents, clean solvent, sludge, etc. All data nicely visible on color monitor. Automation distillation without or with very limited operator supervision. Reduction of emissions through enclosure of discharge area. Distillation under vacuum to lower boiling point and heating. All electrical parts are UL, FM & CSA listed.

Distillation output *)

ROTOmAX 15:	13 - 23 GPH	(50 - 90 l/h)
ROTOmAX 20:	15 - 30 GPH	(60 - 120 l/h)
ROTOmAX 30:	23 - 45 GPH	(90 - 180 l/h)
ROTOmAX 50:	45 - 75 GPH	(150 - 300 l/h)
ROTOmAX 75:	60 - 115 GPH	(225 - 450 l/h)
ROTOmAX 110:	85 - 170 GPH	(330 - 700 l/h)

*) Recovery rate depends on type of solvent and solvent contamination



Disti Kleen, Incorporated

13420 Reese Blvd. W
Phone: (704)948-1257
E-mail: disti@disti.net

Huntersville, NC 28078
Fax: (212)202-4526
Web Page: www.disti.net

Solvent Recovery Questionnaire

SOLVENT RECOVERY with Disti-Kleen – Basic information to evaluate right sized system:

CONTACT PERSON:

COMPANY NAME:

ADDRESS:

CITY:

STATE:

ZIP:

PHONE NUMBER:

FAX NUMBER:

E-MAIL

Gallons of solvents used per month:

How many shifts does your operation run:

Type of solvents and Boiling Point:

Does your product contain Nitrocellulose?

What does your company do?

